



利帅影视

**LISHUAI FILM &
TELEVISION EQUIPMENT**

高新技术企业

证书编号:04619Q10466R0M
GB/T19001-2016/ ISO9001:2015标准



[Http://www.lishuai.com.cn](http://www.lishuai.com.cn)



FOCUS 150D

使用手册
USER MANUAL

余姚利帅影视器材有限公司
YUYAO LISHUAI FILM & TELEVISION EQUIPMENT CO.,LTD

LS 余姚利帅影视器材有限公司
YUYAO LISHUAI FILM & TELEVISION EQUIPMENT CO.,LTD

地址:浙江省余姚市荣创路31号
Add:No.31 Rongchuang Road, Yuyao City, Zhejiang Province, China
Tel:+86-574-62763333/62636368
Fax:+86-574-62636398
Email:ls@lishuai.com.cn lsysqj@mail.nbptt.zj.cn
[Http://www.lishuai.com.cn](http://www.lishuai.com.cn) www.lishuai-lighting.com www.led-studiolights.com

I150DI**[特征]**

- 1.采用台湾原大功率LED光源。色温精确，显色指数及TLCI达到95及以上，光衰6000小时内≤2%，工作寿命长达5万小时以上。
- 2.带NTC温度检测，自动控制风扇转速,灯体过热保护功能。
- 3.0%到100% PWM集成数字无极调光，调光过程线性、均匀。
- 4.预设11种特效模式。
- 5.内置无线控制模块，可通过遥控器无线控制。
- 6.灯头采用保荣口鳞甲纹标准罩，应用配件广泛。
- 7.台湾明纬适配器，标准的电流输出保证产品的稳定性。
- 8.高强度铝外壳具有良好的散热性，有利于保障产品的整体寿命。
- 9.稳固安全的全金属支架，带锁紧功能，可用于不同角度的拍摄。
- 10.LED无热技术，确保光源输出在各种环境下稳定、一致、准确。
- 11.亮度，色温在LCD屏数字显示,实时数据精确展现。
- 12.适合室内外视频拍摄、采访、静物拍摄、人像拍摄、微电影拍摄等。

[注意事项]

- 1.LED通电使用前，请取下保护罩并安装标准罩。
- 2.拆卸灯罩时必须按下拆卸按钮，请勿强力拆卸灯罩。
- 3.使用过程中要避免异物接触到灯珠表面,以免造成灯珠损坏!
- 4.请勿遮挡灯体表面的散热孔，否则会引起产品过热而保护。
- 5.请勿湿手操作,否则可能引起触电。
- 6.请勿在易燃、易挥发液体或气体的环境下使用,否则可能引起爆炸或火灾。
- 7.请勿将本产品置于阳光直射下封闭的车辆内或其他高温环境使用,否则产品可能会被频繁过热保护,LED灯珠重复开启和关闭,从而影响使用。
- 8.请勿损坏、拆卸、用力拉拽或缠绕电源线，否则可能导致火灾或触电。
- 9.请勿将本产品置于重物之下。
- 10.请用干布擦拭产品上的灰尘。
- 11.请使用跟本产品配套的电源线,以免造成损坏。
- 12.禁止用力碰撞LCD触摸屏,以免造成损坏。
- 13.产品悬挂使用时需正确安装安全绳,以确保安全。
- 14.灯罩等配件使用时请确保安装到位,以免跌落造成损坏或引起其他安全问题。

[产品清单]**150D**

- | | | |
|-----------|-----------|-----------|
| ① 灯-1PC | ② 保护罩-1PC | ③ 标准罩-1PC |
| ④ 电源线-1PC | ⑤ 安全绳-1PC | ⑥ 遥控器-1PC |
| ⑦ 合格证-1PC | ⑧ 保修卡-1PC | ⑨ 说明书-1PC |

[选配]

八角柔光箱

方形柔光箱

抛物线柔光箱

聚光筒

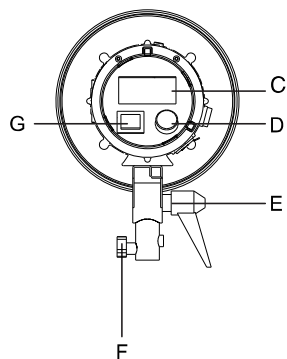
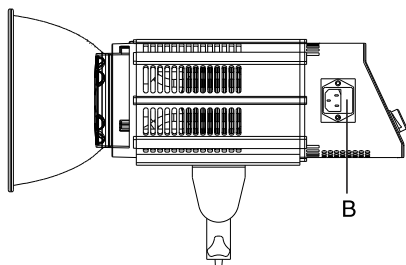
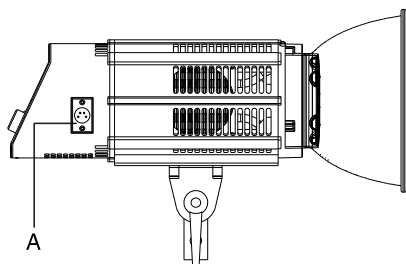
球形柔光箱

雷达罩

雷达罩+蜂窝

雷达罩+柔光布

[各部件名称]



150D

- Ⓐ 4针XLR插座
- Ⓑ AC电源插座
- Ⓒ LCD显示屏
- Ⓓ 功能调节旋钮
- Ⓔ 角度调节锁紧手柄
- Ⓕ 支架接头锁紧螺丝
- Ⓖ 电源开关

[规格参数]

规格	型号	150D
LED		150W集成COB
照射角度		裸光源120°, 标准罩55°
色温		5600K ± 200K
显色指数		≥ 95
TLCI		95-98
工作电压		DC15-24V, AC100-240V, 50/60Hz
散热系统		热管式散热器+温控风扇(自动控制风扇)
尺寸		12.9x18.9x32cm
重量		2.45kg
配件		标准罩, 保护罩, 电源线, 安全绳, 遥控器
选配		保荣接口柔光箱

[照度]

距离	裸灯	带标准罩
1M	5300LUX	16600LUX
2M	1400LUX	4100LUX
3M	640LUX	1800LUX
4M	390LUX	1000LUX
5M	260LUX	660LUX

[使用说明]

1. 灯具安装

- (1) 逆时针旋转支架接头锁紧螺丝至外部支架接头可套入，确保外部支架接头套入正确到位，然后顺时针紧固该螺丝。

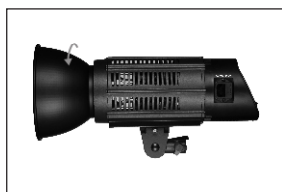


- (2) 逆时针旋转锁紧手柄,把灯体调整到合适角度,然后顺时针紧固该手柄至角度不可调。

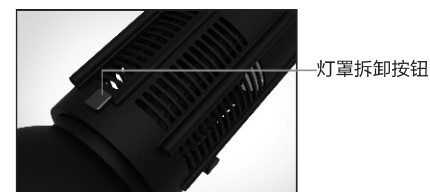


2. 灯罩装卸（标准的保荣卡口安装）

- (1) 将灯罩上的卡口对准灯头上的卡槽对齐后靠近压入,顺时针旋转灯罩,听到咔嚓一声,灯罩卡入到位(灯头对准操作人员)。



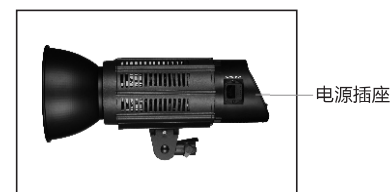
- (2) 需要取出灯罩时把灯头上方的装卸按钮往后掰,然后把灯罩逆时针旋转取出。(灯头对准操作人员)。



3. 供电

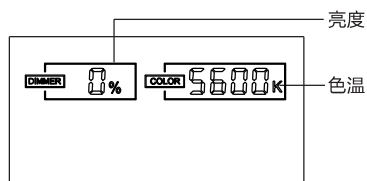
方式一：通过AC电源线连接灯体AC电源插座接通外部电源(AC100-240V)。

方式二：通过DC电源线连接灯体4针XLR插座接通外部电源(DC15-24V)。



4. 操作步骤

- (1) 打开电源开关至ON档位,LCD屏显示实时亮度、色温。
- (2) 亮度调节:通过调节功能调节旋钮来调整亮度,顺时针调节亮度增加,逆时针调节亮度减小,亮度调节范围0%-100%。



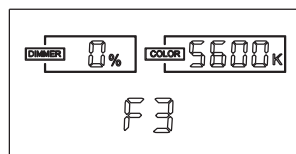
(3) 特效模式操作方式:

开机状态下:常亮时按住功能调节旋钮3秒以上进入特效模式,此时通过调节旋钮可以调节特效模式,按一下旋钮,可调节该模式的亮度,调节范围0-100%。再按一下调节旋钮,又可旋转调节旋钮选择特效模式,调节范围F1-F11,长按旋钮3秒以上,退出特效模式。

注: F1-闪电模式, F2-烟花模式, F3-爆闪模式, F4-呼吸模式, F5-警车模式,

F6-SOS模式, F7-故障灯模式, F8-转向灯模式, F9-狗仔队模式,

F10-屏幕模式, F11-远近光灯模式。



[遥控器按键操作说明]



1. 电源开关键:关机时轻按该键开机,开机时按住该键1秒以上关机
2. 声音/对码键:轻按该键声音/消音选择,按住3秒以上对码
3. 亮度减键:轻按一次该键亮度减小1%,按住该键2秒以上亮度快速减小
4. 亮度增键:轻按一次该键亮度增加1%,按住该键2秒以上亮度快速增加
5. 特效减键:轻按一次该键特效模式减小一个数值(F11-F1)
6. 特效增键:轻按一次该键特效模式增加一个数值(F1-F11)
7. 亮度快捷键:轻按该键亮度在25%,50%,75%,100%,25%.....循环切换
8. 特效键:常亮模式下按住该键1秒以上进入特效模式,特效模式下轻按该键进入常亮模式

注意事项:

- (1) 对码:按住"声音键"3秒以上,听到蜂鸣器响一声,对码成功。
- (2) 单灯对码时,把不需要对码的灯关闭,然后进行对码。
- (3) 多灯对码时,把需要对码的灯打开,不需要对码的灯关闭,然后进行对码。
- (4) 出厂时单灯遥控一对一已经对码完成,如需多灯控制,只需把需要对码的灯打开,不需要对码的灯关闭,重新对码即可。
- (5) 可遥控距离: 20米

保修期: 质保3年。

[150D]

Characteristics:

1. Taiwan imported high-power COB LED, standard color temperature, CRI and TLCI 95 and above, illumination decay less than 2% within 6000 hrs' working. The lifetime of LED bulbs is more than 50,000 hours.
2. With NTC temperature detection, automatically control the fan to protect the light fixture from overheating.
3. Dimmable from 0-100% and flicker-free due the PWM integrated design.
4. With 11 special effect mode, suitable for creating a special shooting environment.
5. The light fixture can be controlled by remote control.
6. Included a specially designed standard reflector with Bowen kind mount.
7. With high quality Taiwan brand "MW" AC adapter, the fixture works more stable.
8. Solid aluminum shell has good heat dissipation to better ensure the lifetime of the fixture.
9. Use all-metal stand adapter, help the fixture working with different angle.
10. LED heat prevention technology guarantees that it will emit steady and accurate light under varying conditions.
11. LCD screen display window, convenient for users to observe the brightness and color temperature data.
12. Suitable for indoor and outdoor video shooting, interview, still life shooting, portrait shooting, and micro movie, etc.

Warnings:

1. Please do take off the protective cover and install the standard reflector before use.
2. Please do press the reflector release button on the front top of the fixture to remove the standard reflector.
3. During use, avoid dirt or other things from contacting the surface of the COB LED to avoid damage to the LED.
4. Do not block the heat dissipation holes on light body, otherwise it will cause the product to overheat and stop working.
5. Do not operate with wet hands, doing so may cause electric shock.
6. Do not operate in environments near flammable gases or volatile liquids as this may increase the risk of explosion/fire.
7. Do not use this product in a closed vehicle under direct sunlight or other high-temperature environments, otherwise the product may be protected frequently and affect the use.
8. Do not damage, disassemble, pull or twist the power cord forcibly, otherwise it may cause fire or electric shock.
9. Do not place under heavy objects.
10. Keep the light surface clean with a soft, dry cloth.
11. Please use the charging cable provided with this product.
12. Do not impact the LCD screen with force to avoid damage.
13. Use the safety cable when the fixture need to be hanged.
14. When using the accessories, please make sure that they are installed in place, so as not to cause damage due to fall or other safety problems.

Packing List:



150D

- | | | |
|----------------------------|--------------------------|----------------------------|
| ① Light - IPC | ② Protective cover - IPC | ③ Standard reflector - IPC |
| ④ Power cord - IPC | ⑤ Safety cable - IPC | ⑥ Remoter control - IPC |
| ⑦ Instruction manual - IPC | | |

Optional accessories:



Octagon Softbox



Rectangular Softbox



Deep Parabolic Softbox



Optical Snoot



Lantern Softbox



Dish Reflector

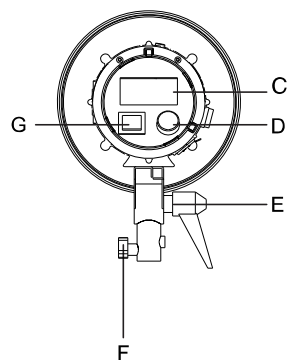
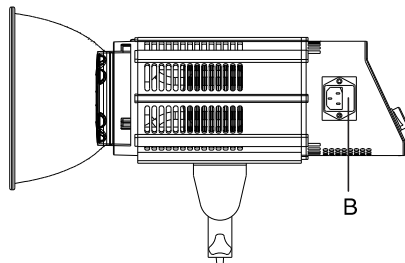
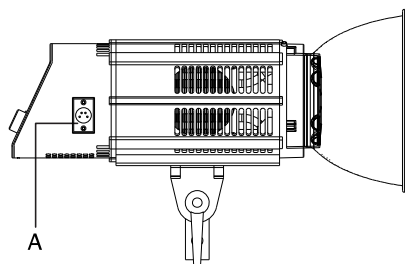


Dish Reflector and
Honeycomb Grid



Dish Reflector and
Cloth Diffuser

Parts Diagram:



I50D

- Ⓐ 4 pin XLR socket
- Ⓑ AC power socket
- Ⓒ LCD screen
- Ⓓ Function adjustment knob
- Ⓔ Angle adjustment & locking handle
- Ⓕ Stand mount locking screw
- Ⓖ Power switch

Specifications:

Spec	Model
LED	I50W COB
Beam angle	120 degree , 50 degree with standard reflector
Color temperature	5600K±200K
CRI	≥95
TLCI	95-98
Working voltage	DC15-24V,AC100-240V,50/60Hz
Cooling system	Heat pipe radiator , Temperature controlled fan
Dimension	5.07x7.44x12.6" (12.9x18.9x32cm)
Weight	5.4lb (2.45kg)
Included accessory	Standard Reflector, Protective Cover, Power Cable, Safety, Cable Remote Control
Optional accessory	Softbox with Bowen kind mount

Illuminance:

Distance	Light without reflector	Light with standard reflector
1M	5300LUX	16600LUX
2M	1400LUX	4100LUX
3M	640LUX	1800LUX
4M	390LUX	1000LUX
5M	260LUX	660LUX

Operating instructions:

1. How to set up the light

(1) Loosen the stand mount locking screw counterclockwise. Place the mount on the light stand and secure the screw by turning clockwise. Please ensure the light stand is fully mounted onto the mounting plate and the screw is securely fastened.

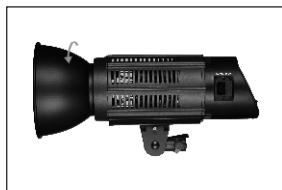


(2) Loosen the angle adjustment & locking handle counterclockwise, adjust the light fixture to a desired angle and turn the handle clockwise to secure it in position.



2. How to set up the standard reflector with Bowen kind mount

(1) Align the reflector bayonet with the slot on the front of the light and press it in, turn it clockwise until you hear a click. The reflector snaps into place.



(2) To remove the reflector, press the reflector removal button on the top of the light fixture, turn the reflector counterclockwise to remove it.



3. Power supply

(1) AC power supply (AC 100-240V)

Connect the AC power cable to the AC power socket on the light fixture to power the light.

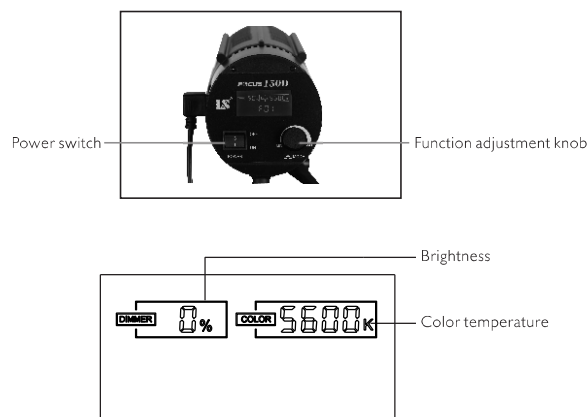
(2) DC power supply (DC 15-24V)

Connect DC power cable to the 4 pin XLR socket on the light fixture to power the light.



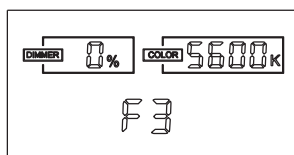
4. Operating instructions

- (1) Turn on the light by the power switch, the LCD screen show the real time data of brightness and color temperature.
- (2) Adjust the brightness by turning the function adjustment knob, turn it clockwise or counterclockwise to increase or decrease the brightness between 0-100%.



- (3) When the light is turned on, press the function adjustment knob about 3 seconds to enter into the special effect mode, and then turn it clockwise or counterclockwise to adjust between 11 different special effect of F1, F2, F3... F11. In each effect mode, press the knob one time, and then turn the knob clockwise and counterclockwise to adjust the brightness between 0-100%. And to exit any of the special effect mode, press the function knob about 3 sends.

Note: F1-Lightning mode, F2-Fireworks mode, F3-Flash mode, F4-Breath mode, F5-Cop car mode, F6-SOS mode, F7- Fault light mode, F8-Turn signal mode, F9-Tracing mode, F10- Screen mode, F11- High and low beam mode.



Operation of the remote control:



1. Power ON/OFF Button: Press the button once to turn the light on; press again to turn it off.
2. Sound Button(Pairing Button): Press the button for more than 3 seconds to turn on or off the sound.
3. Brightness Decrease Button: Each time you press the button, the brightness is decreased by 1%. To decrease intensity rapidly, press and hold the button for 2 seconds or above.
4. Brightness Increase Button: Each time you press the button, the brightness is increased by 1%. To increase intensity rapidly, press and hold the button for 2 seconds or above.
5. FX Decrease Button: Press once to change the special effect mode one value each time from F11-F1.
6. FX Increase Button: Press once to change the special effect mode one value each time from F1-F11.
7. Brightness Shortcut Button: Each time the button is pressed, it is cyclically switched between 25%, 50%, 75% and 100% of intensity.
8. FX Button: Press once to enter the special effect mode, press again to exit the special effect mode.

Pairing Instructions:

- (1) Turn on the light/lights you wish to pair with the remote control.
 - (2) Press and hold the Pairing Button for more than 3 seconds, until buzzer on power control box sounds.
 - (3) The light/lights are now paired with your remote control.
 - (4) Remote control distance: 20 meters.
- Note: When pairing, all light units that are powered on will pair to a single remote control. Each light from the open box is paired with the remote control included.

Warranty: LED lights are guaranteed overseas for 2 years.